



## NP3-6

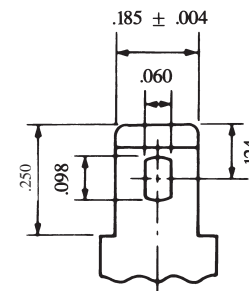
Sealed Rechargeable  
Lead-Acid Battery

6V, 3.0Ah

### Specifications

- **NOMINAL VOLTAGE:** 6V
- **NOMINAL CAPACITY:**
  - 20 hr. rate of .15A to 5.25V 3.0Ah
  - 10 hr. rate of .28A to 5.25V 2.8Ah
  - 5 hr. rate of .52A to 5.10V 2.6Ah
  - 1 hr. rate of 1.80A to 4.80V 1.8Ah
- **WEIGHT (approx.):** 1.43 pounds (0.65 kgs.)
- **ENERGY DENSITY (20 hr. rate):** 1.08 WH/cubic inch (66 WH/liter)
- **SPECIFIC ENERGY (20 hr. rate):** 12.6 WH/pound (28 WH/kg)
- **INTERNAL RESISTANCE OF CHARGED BATTERY:** 30 milliohms (approx.)
- **MAXIMUM DISCHARGE CURRENT WITH STANDARD TERMINALS:** 40 amperes
- **MAXIMUM SHORT-DURATION DISCHARGE CURRENT:** 100 amperes
- **OPERATING TEMPERATURE RANGE:**
  - CHARGE 5°F to 122°F (-15°C to 50°C)
  - DISCHARGE -4°F to 140°F (-20°C to 60°C)
- **CHARGE RETENTION (shelf life) at 68°F (20°C):**
  - 1 month 97%
  - 3 months 91%
  - 6 months 85%
- **LIFE EXPECTANCY:**
  - STANDBY USE 3 to 5 years
  - CYCLE USE (approx.):
    - 100% depth of discharge 250 cycles
    - 50% depth of discharge 550 cycles
    - 30% depth of discharge 1200 cycles
- **SEALED CONSTRUCTION:** Can be operated, charged or stored in any position without leakage.
- **STANDARD TERMINAL:** Quick Disconnect .187
- **HOUSING MATERIAL:** ABS Resin

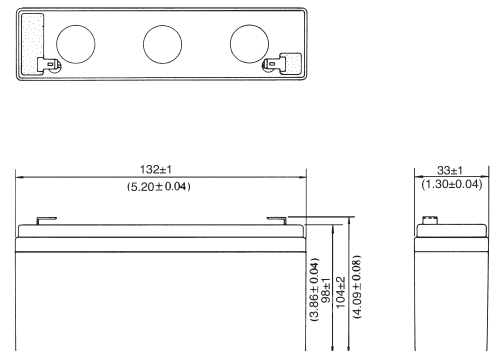
### Terminal



INCH = MM	
.250	6.35
.185	4.70
.124	3.15
.098	2.49
.060	1.52
.031	0.79
.020	0.51
.004	0.10

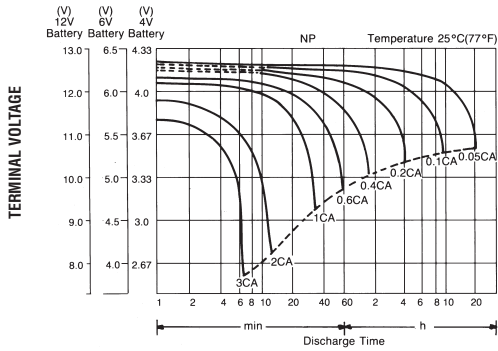
DIMENSIONS: INCHES

### Dimensions

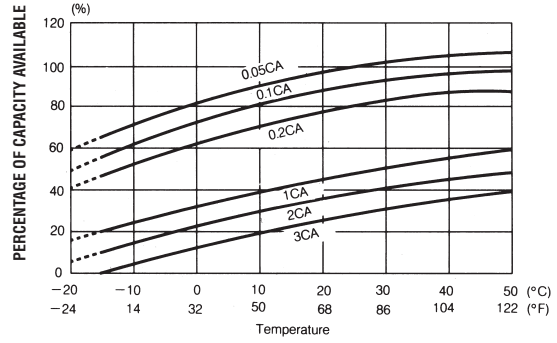


UL listing pending - File No MH16464

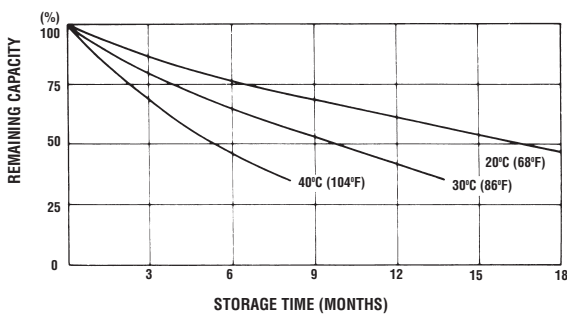
### DISCHARGE CHARACTERISTIC CURVES AT 25°C (77°F)



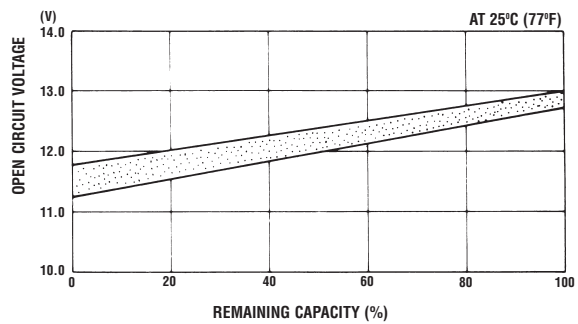
### TEMPERATURE EFFECTS IN RELATION TO BATTERY CAPACITY



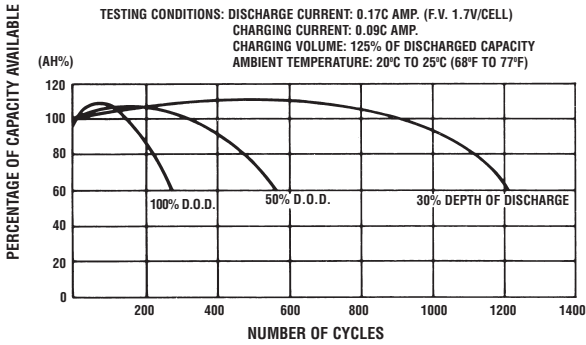
### SELF DISCHARGE CHARACTERISTICS



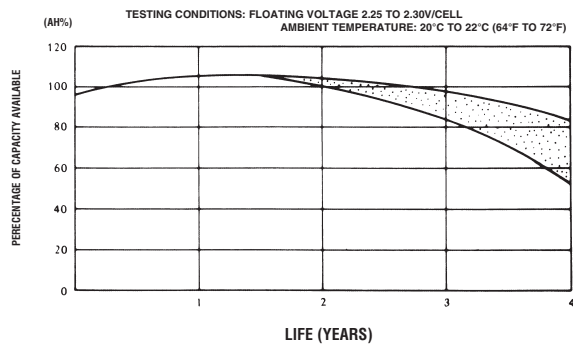
### OPEN CIRCUIT VOLTAGE VS REMAINING CAPACITY



### CYCLE SERVICE LIFE IN RELATION TO DEPTH OF DISCHARGE



### FLOAT SERVICE LIFE



When the battery will be used by current in excess of 3C, consult with EnerSys prior to use.

#### CHARGING METHODS (At 20°C)

**Cycle use:** Maximum charging current 0.75A  
Charging voltage 7.2 to 7.5V

#### CAUTION

- Avoid short circuit
- Do not charge in a sealed container.

**Standby use:** Float charging voltage 6.75 to 6.90V



**EnerSys**  
P.O. Box 14145  
Reading, PA 19612-4145  
USA  
Tel: +1-610-208-1991  
+1-800-538-3627

**EnerSys EMEA**  
Brussels, Belgium  
Tel: +32 (0)2 247 94 47  
**EnerSys Asia**  
Guandong, China  
Tel: +86 755 689 9220

Represented by:

© 2005 EnerSys. All rights reserved.  
Trademarks are the property of EnerSys and its affiliates unless otherwise noted.