



NP3.4-12FR

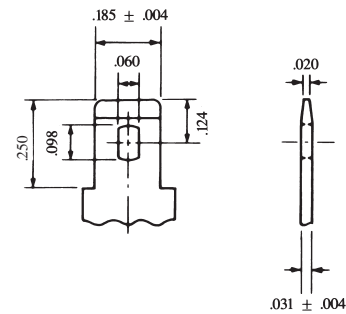
Sealed Rechargeable
Lead-Acid Battery

12V, 3.4Ah

Specifications

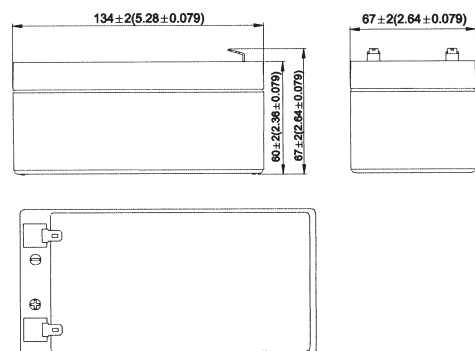
- **NOMINAL VOLTAGE:** 12V
- **NOMINAL CAPACITY:**
 - 20 hr. rate of 0.17A to 10.5V 3.4Ah
 - 10 hr. rate of 0.31A to 10.5V 3.1Ah
 - 5 hr. rate of 0.54A to 10.2V 2.7Ah
 - 1 hr. rate of 2.04A to 9.60V 2.04Ah
- **WEIGHT (approx.):** 3.02 pounds (1.37 kgs.)
- **ENERGY DENSITY (20 hr. rate):** 1.09 WH/cubic inch (66.4 WH/liter)
- **SPECIFIC ENERGY (20 hr. rate):** 13.3 WH/pound (29.2 WH/kg)
- **INTERNAL RESISTANCE OF CHARGED BATTERY:** 45 milliohms (approx.)
- **MAXIMUM DISCHARGE CURRENT WITH STANDARD TERMINALS:** 34 amperes
- **MAXIMUM SHORT-DURATION DISCHARGE CURRENT:** 102 amperes
- **OPERATING TEMPERATURE RANGE:**
 - CHARGE 5°F to 122°F (-15°C to 50°C)
 - DISCHARGE -4°F to 140°F (-20°C to 60°C)
- **CHARGE RETENTION (shelf life) at 68°F (20°C):**
 - 1 month 97%
 - 3 months 91%
 - 6 months 85%
- **LIFE EXPECTANCY:**
 - STANDBY USE** 3 to 5 years
 - CYCLE USE (approx.):**
 - 100% depth of discharge 250 cycles
 - 50% depth of discharge 550 cycles
 - 30% depth of discharge 1200 cycles
- **SEALED CONSTRUCTION:** Can be operated in any position without leakage.
- **STANDARD TERMINAL:** Quick Disconnect .187
- **HOUSING MATERIAL:** Container and cover made from Flame Retardant ABS (UL94-V0/L.O.I.>28%)

Terminal



INCH = MM	
.250	6.35
.185	4.70
.124	3.15
.098	2.49
.060	1.52
.031	0.79
.020	0.51
.004	0.10

Dimensions



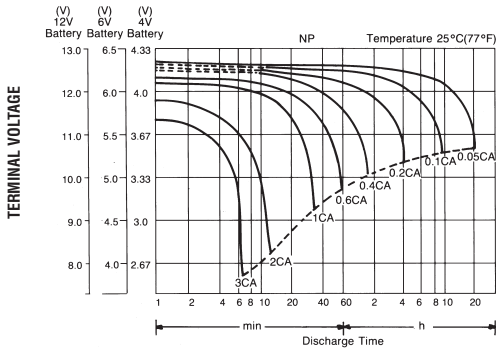
DIMENSIONS: MM (INCHES)

UL listing pending - File No MH16464

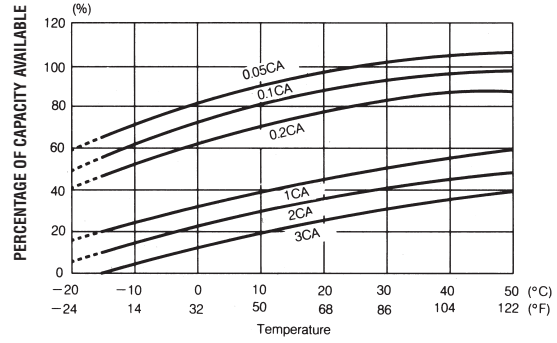


Publication No: EN-NP3.4-12-1 • August 2006

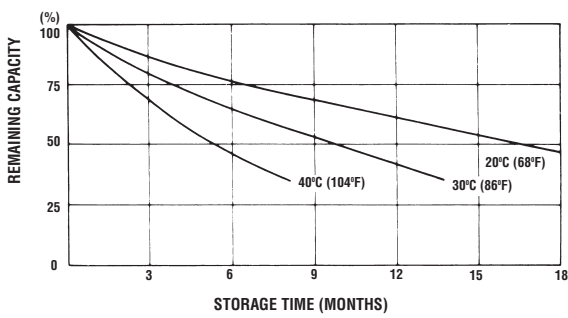
DISCHARGE CHARACTERISTICS CURVES AT 25°C (77°F)



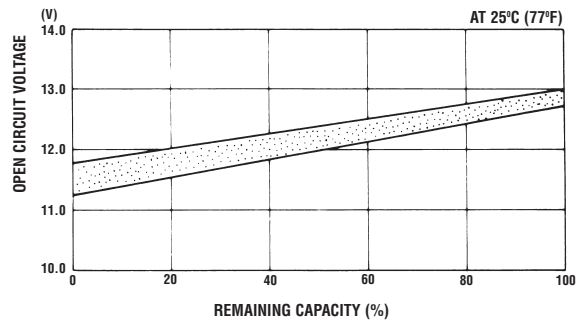
TEMPERATURE EFFECTS IN RELATION TO BATTERY CAPACITY



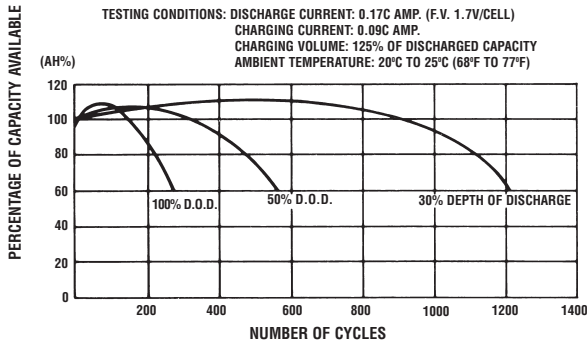
SELF DISCHARGE CHARACTERISTICS



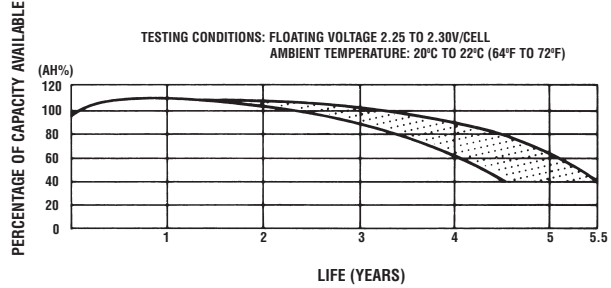
OPEN CIRCUIT VOLTAGE VS REMAINING CAPACITY



CYCLE SERVICE LIFE IN RELATION TO DEPTH OF DISCHARGE



FLOAT SERVICE LIFE



When the battery will be used by current in excess of 3C, consult with EnerSys prior to use.

CHARGING METHODS (At 20°C)

Cycle use: Maximum charging current 0.68A
Charging voltage 14.4 to 15.0V
Standby use: Float charging voltage 13.50 to 13.80V

CAUTION

- Avoid short circuit.
- Do not charge in a sealed container.



EnerSys
P.O. Box 14145
Reading, PA 19612-4145
USA
Tel: +1-610-208-1991
+1-800-538-3627

EnerSys EMEA
Brussels, Belgium
Tel: +32 (0)2 247 94 47
EnerSys Asia
Guandong, China
Tel: +86 755 689 9220

Represented by:

