



NP7-6 NP7-6FR

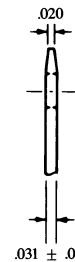
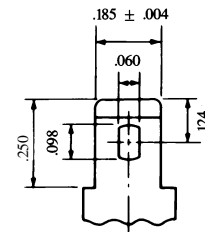
Sealed Rechargeable
Lead-Acid Battery

6V, 7.0Ah

Specifications

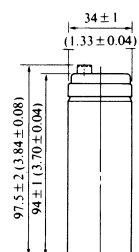
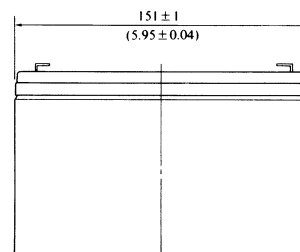
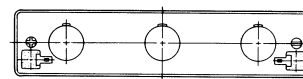
- **NOMINAL VOLTAGE:** 6V
- **NOMINAL CAPACITY:**
 - 20 hr. rate of 0.35A to 5.25V 7.0Ah
 - 10 hr. rate of 0.65A to 5.25V 6.5Ah
 - 5 hr. rate of 1.19A to 5.10V 5.95Ah
 - 1 hr. rate of 4.20A to 4.80V 4.2Ah
- **WEIGHT (approx.):** 2.98 pounds (1.35 kgs.)
- **ENERGY DENSITY (20 hr. rate):** 1.43 WH/cubic inch (87.5 WH/liter)
- **SPECIFIC ENERGY (20 hr. rate):** 13 WH/pound (28.7 WH/kg)
- **INTERNAL RESISTANCE OF CHARGED BATTERY:** 15 milliohms (approx.)
- **MAXIMUM DISCHARGE CURRENT WITH STANDARD TERMINALS:** 40 amperes
- **MAXIMUM SHORT-DURATION DISCHARGE CURRENT:** 210 amperes
- **OPERATING TEMPERATURE RANGE:**
 - CHARGE 5°F to 122°F (-15°C to 50°C)
 - DISCHARGE -4°F to 140°F (-20°C to 60°C)
- **CHARGE RETENTION (shelf life) at 68°F (20°C):**
 - 1 month 97%
 - 3 months 91%
 - 6 months 85%
- **LIFE EXPECTANCY:**
 - STANDBY USE** 3 to 5 years
 - CYCLE USE (approx.):**
 - 100% depth of discharge 250 cycles
 - 50% depth of discharge 550 cycles
 - 30% depth of discharge 1500 cycles
- **SEALED CONSTRUCTION:** Can be operated in any position without leakage.
- **STANDARD TERMINAL:** Quick Disconnect .187
- **HOUSING MATERIAL:** ABS Resin
- **OPTIONAL:** Container and cover made from Flame Retardant ABS (UL94-V0/L.O.I.>28%)

Terminal



INCH = MM	
.250	6.35
.185	4.70
.124	3.15
.098	2.49
.060	1.52
.031	0.79
.020	0.51
.004	0.10

Dimensions



DIMENSIONS: MM (INCHES)

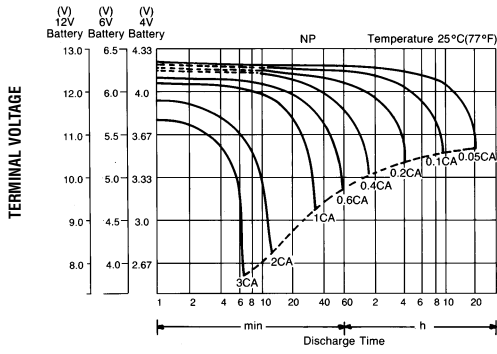


RECOGNIZED BY UL, File No. MH 16464

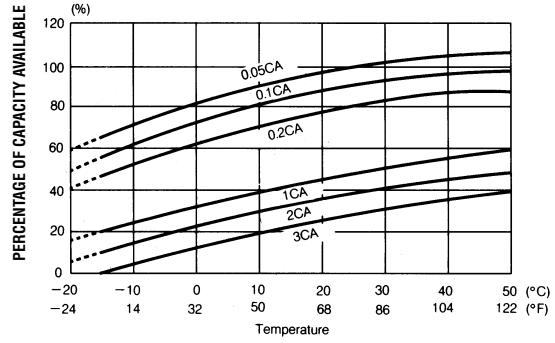
EnerSys™

Power/Full Solutions™

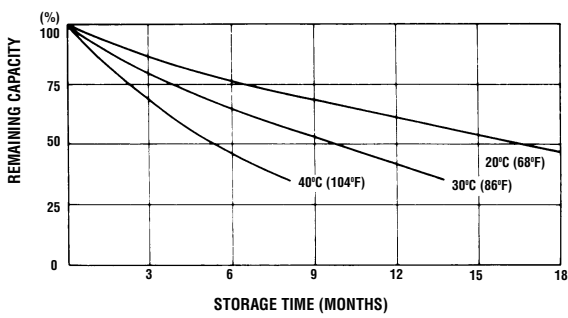
DISCHARGE CHARACTERISTIC CURVES AT 25°C (77°F)



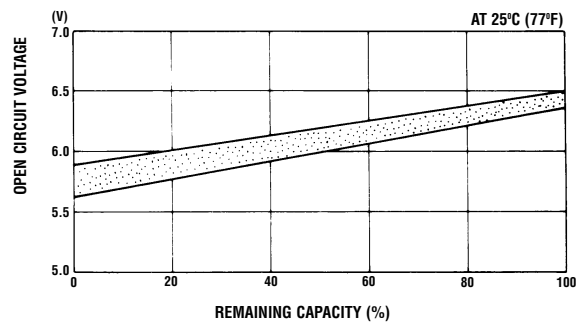
TEMPERATURE EFFECTS IN RELATION TO BATTERY CAPACITY



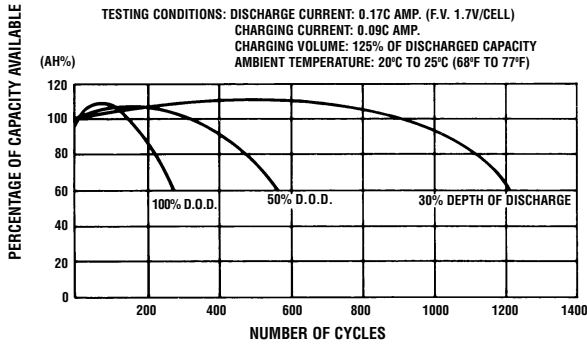
SELF DISCHARGE CHARACTERISTICS



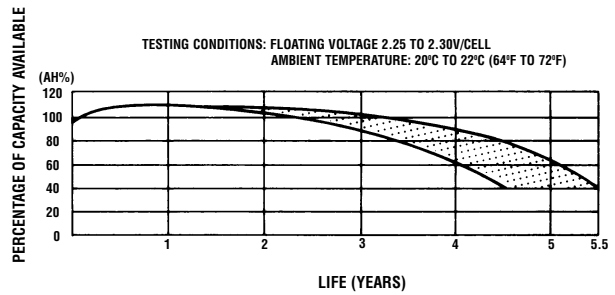
OPEN CIRCUIT VOLTAGE VS REMAINING CAPACITY



CYCLE SERVICE LIFE IN RELATION TO DEPTH OF DISCHARGE



FLOAT SERVICE LIFE



When the battery will be used by current in excess of 3C, consult with EnerSys, Inc. prior to use.

CHARGING METHODS (At 20°C)

Cycle use: Maximum charging current 1.75A
Charging voltage 7.2 to 7.5V
Standby use: Float charging voltage 6.75 to 6.90V

CAUTION

- Avoid short circuit
- Do not charge in a sealed container.



EnerSys Inc.
P.O. Box 14145
Reading, PA 19612-4145
USA
Tel: +1-610-208-1991
+1-800-538-3627

EnerSys EMEA
Brussels, Belgium
Tel: +32 (0)2 247 94 47
EnerSys Asia
Guandong, China
Tel: +86 755 689 9220

Represented by: