

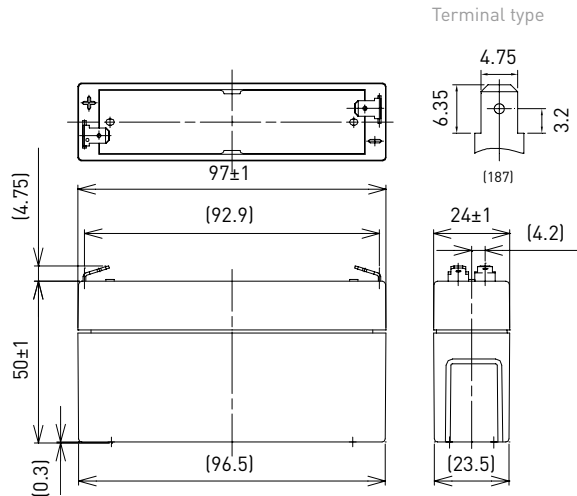
# LC-R061R3P\*1

FOR MAIN AND STANDBY POWER SUPPLIES.  
 EXPECTED TRICKLE DESIGN LIFE: 6 - 9 YEARS AT 20°C  
 ACCORDING TO EUROBAT.

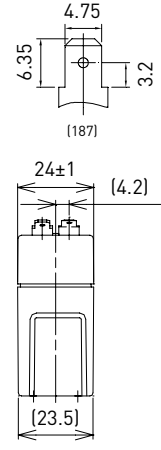
## DIMENSIONS (MM)



Contents indicated (including the recycle marking, etc.) are subject to change without notice. Battery case resin: standard (UL94 HB)

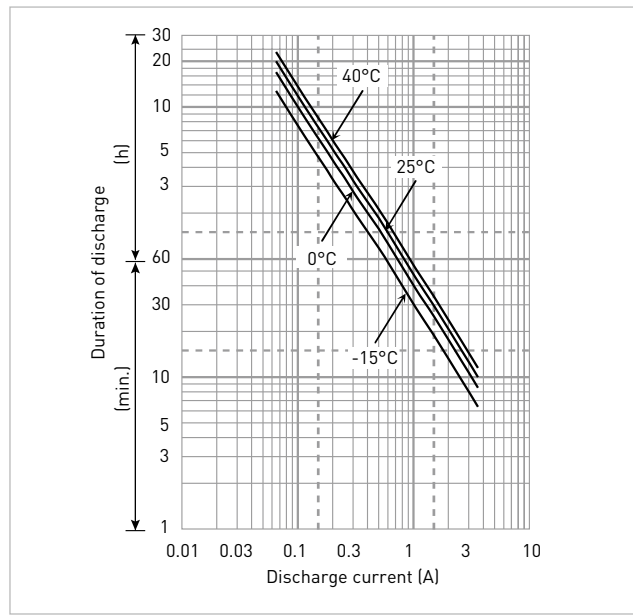


Terminal type



Specifications		LC-R061R3P*1
<b>Nominal voltage (V)</b>		6
<b>Nominal capacity</b>	<b>20 hours rate (Ah)</b>	1.3
<b>Dimensions</b>	<b>Length (mm)</b>	24
	<b>Width (mm)</b>	97
	<b>Total height (mm)</b>	55
<b>Approx. mass (kg)</b>		0.25
<b>Terminal type</b>		Faston 187
<b>Capacity (25°C)</b>	<b>20 hours rate (Ah)</b>	1.3
	<b>10 hours rate (Ah)</b>	1.1
	<b>3 hours rate (Ah)</b>	1.0
	<b>1 hour rate (Ah)</b>	0.9
<b>Impedance (mΩ)</b>	<b>Fully charged battery (25°C)</b>	50
<b>Temperature dependency of capacity (%) - 20 hour rate</b>	<b>40°C</b>	102
	<b>25°C</b>	100
	<b>0°C</b>	85
	<b>-15°C</b>	65
<b>Remaining capacity (25°C)</b>	<b>After 3 months (%)</b>	91
	<b>After 6 months (%)</b>	82
	<b>After 12 months (%)</b>	64

## DURATION OF DISCHARGE VS. DISCHARGE CURRENT



## WATT TABLE (25°C)

(Wattage/battery)

Cut-off	3min.	5min.	10min.	15min.	20min.	30min.	45min.	1h	1.5h	2h	3h	4h	5h	6h	10h	20h
4.80V	39.1	30.8	20.1	15.4	12.9	9.61	6.78	5.42	3.73	2.89	2.15	1.65	1.36	1.10	0.726	0.393
4.95V	36.2	28.9	19.7	15.3	12.7	9.51	6.74	5.37	3.66	2.86	2.14	1.64	1.35	1.09	0.723	0.392
5.10V	33.4	27.1	19.2	15.0	12.5	9.40	6.68	5.32	3.58	2.79	2.12	1.63	1.34	1.08	0.715	0.391
5.25V	29.7	24.3	17.8	13.9	11.8	9.19	6.57	5.21	3.51	2.69	2.08	1.62	1.33	1.07	0.712	0.390
5.40V	25.1	21.4	15.9	13.0	11.5	8.87	6.47	5.10	3.41	2.57	2.04	1.60	1.30	1.05	0.704	0.388

## AMPERE TABLE (25°C)

(Ampere/battery)

Cut-off	3min.	5min.	10min.	15min.	20min.	30min.	45min.	1h	1.5h	2h	3h	4h	5h	6h	10h	20h
4.80V	7.02	5.53	3.59	2.67	2.22	1.64	1.16	0.921	0.634	0.484	0.363	0.276	0.228	0.185	0.122	0.066
4.95V	6.52	5.18	3.52	2.65	2.18	1.63	1.15	0.912	0.621	0.480	0.361	0.274	0.226	0.184	0.121	0.065
5.10V	6.01	4.86	3.43	2.60	2.15	1.61	1.14	0.903	0.609	0.468	0.358	0.273	0.224	0.183	0.120	0.065
5.25V	5.34	4.35	3.18	2.42	2.04	1.57	1.12	0.885	0.596	0.451	0.352	0.272	0.222	0.182	0.119	0.065
5.40V	4.51	3.85	2.83	2.26	1.99	1.52	1.10	0.867	0.578	0.433	0.343	0.271	0.217	0.181	0.117	0.063

All mentioned values are average values

\*1 This battery is also available with a flame retardant battery case resin (UL94 V-0): LC-V061R3P.

# LC-R061R3P\*1

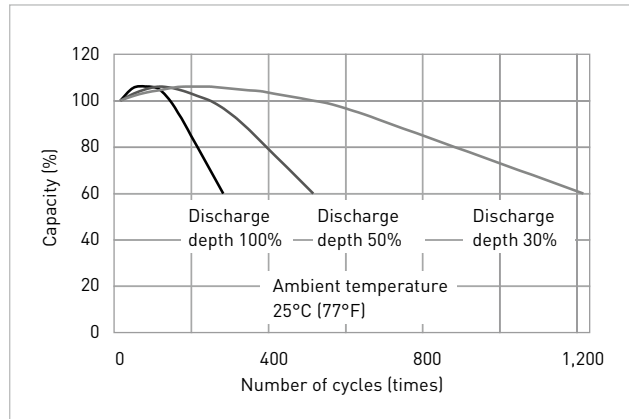
## CHARGING METHOD (25°C)

<b>Cycle use</b>	Control voltage: 7.25V - 7.45V Initial current: 0.52A or smaller
------------------	---

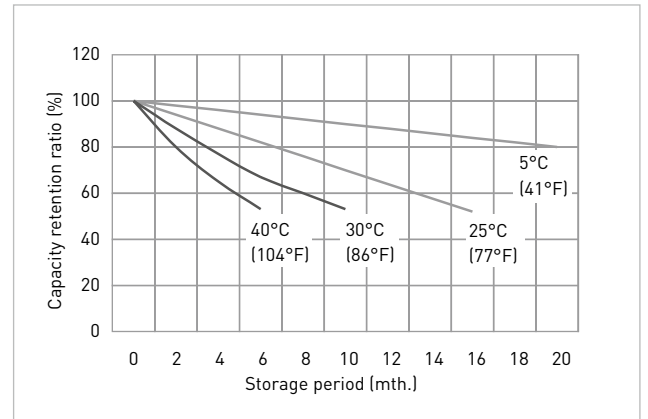
## CUT-OFF VOLTAGE

<b>Discharge current</b>	0.065A - 0.26A	0.26A - 0.65A	0.65A - 1.30A	1.30A - 2.60A	2.60A - 3.90A
<b>Cut-off voltage</b>	5.25V	5.10V	4.95V	4.65V	4.35V

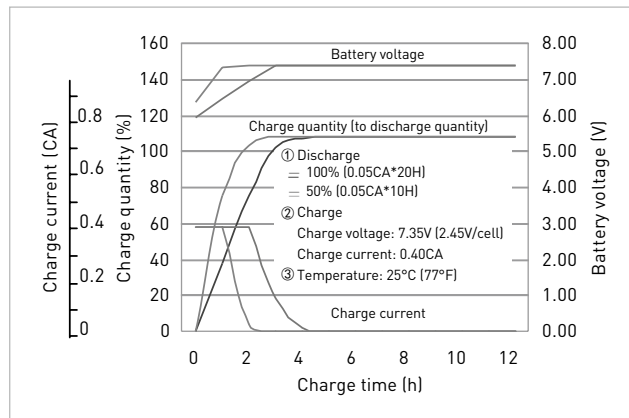
## CYCLE LIFE VS. DEPTH OF DISCHARGE (ACC. IEC 61056)



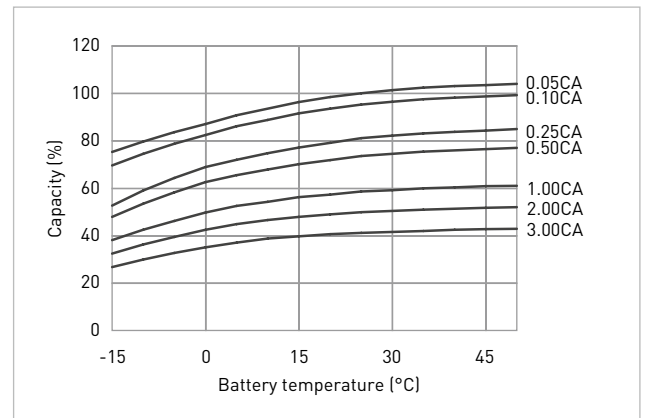
## RESIDUAL CAPACITY TEST RESULT



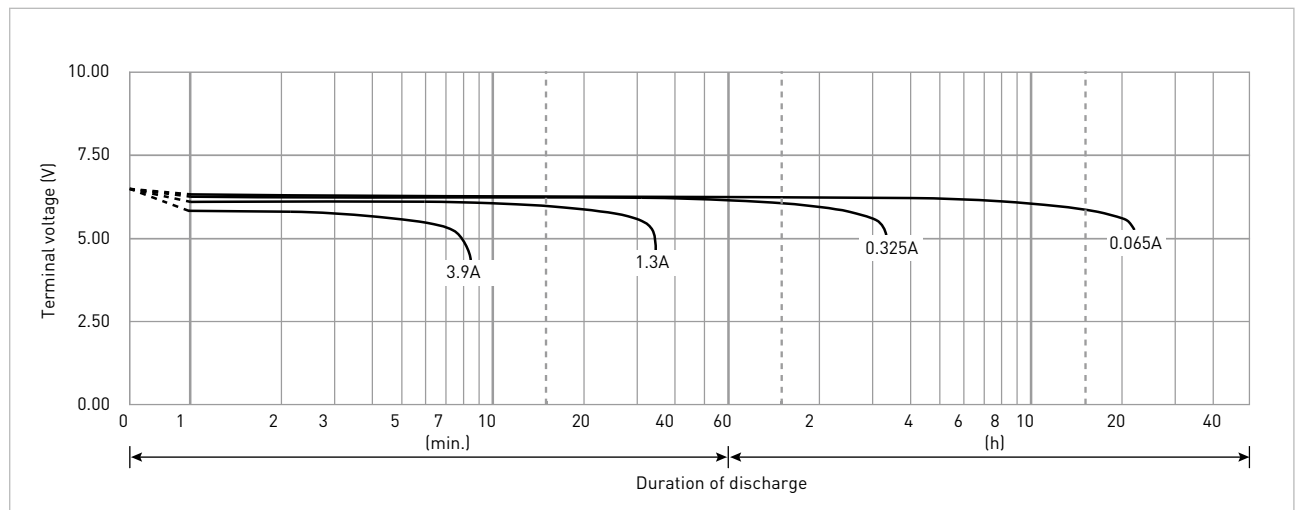
## CONSTANT-VOLTAGE CONSTANT-CURRENT CHARGE CHARACTERISTICS FOR CYCLE USE



## DISCHARGE CAPACITY BY TEMPERATURE AND BY DISCHARGE CURRENT



## DISCHARGE CHARACTERISTICS



\*1 This battery is also available with a flame retardant battery case resin (UL94 V-0): LC-V061R3P.