



RANGE SUMMARY



data safe[®]
MX

EnerSys[®] sets the pace for innovation.

New ideas, new technology and more choices. Through a continuing investment in research and product development, EnerSys consistently delivers the most effective standby power solutions - whatever the application.

DataSafe[®] MX batteries, is the UPS battery that breaks all the rules

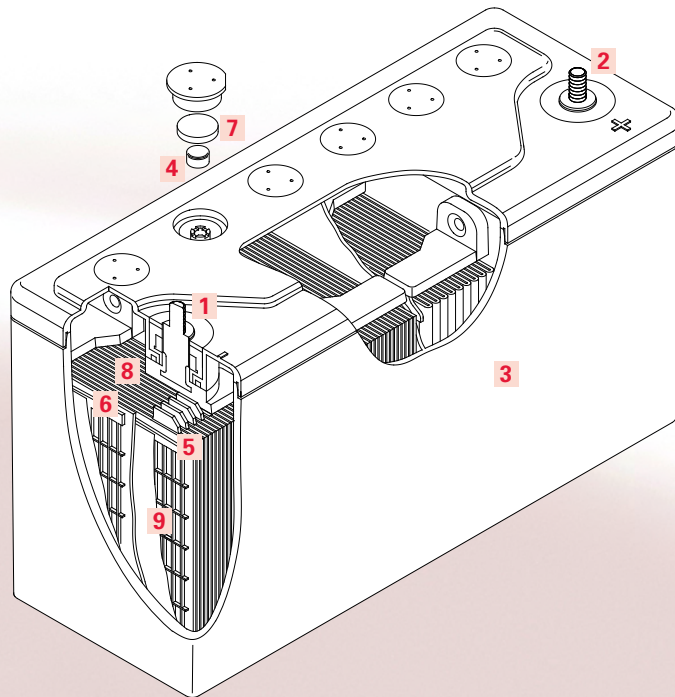
- MORE POWER
- HIGHER PERFORMANCE
- LESS SPACE
- LONGER SHELF LIFE

In every way, DataSafe MX batteries challenge the limitations of traditional standby power batteries, setting new standards for UPS performance.

Available in three sizes from 150W/cell to 270W/cell, the DataSafe MX battery, with its distinctive black ABS box, extends the range of advanced lead acid batteries from EnerSys.

Now you can choose a power source developed specially for UPS and designed to suit your system whatever its size.

From small file server to large main-frame, DataSafe MX batteries are more than a match for today's demanding UPS systems.



Construction

- 1 Terminal posts**
High conductivity post for high rate discharge.
- 2 Pillar seal**
Compressed rubber grommet for superior integrity and longer life.
- 3 Container and cover**
Heat-sealed for maximum strength. Flame retardant (UL94 V-0) ABS plastic.
- 4 Self regulating pressure relief valve**
Ensures no oxygen can enter the cell. Optional remote venting systems are available. Vent adapters and a neoprene tubing system transport gases outside the battery compartment. Under normal operating conditions, gas emission is negligible.
- 5 Pure lead plates**
Advanced thin grid technology and high purity materials for high performance, efficient charging and long life.
- 6 Negative plates**
Active material is balanced against the positive for optimum performance and recombination efficiency.
- 7 Flame arrester**
The valve retaining disc functions as a flame arrester to extinguish a spark or flame.
- 8 Separators**
Separator material is resilient to scuffs and tears to minimise risk of internal shorts.
- 9 Electrolyte**
Superior grade dilute sulphuric acid absorbed into separator material.

Features & Benefits

HIGHER POWER - For short duration high-rate discharges up to one hour there's nothing to touch DataSafe® MX batteries. It delivers a stunning 50% more power than conventional batteries occupying the same space. Alternatively, for the same power, DataSafe MX batteries cut battery accommodation by more than a third to give you the option of smaller cabinets or more room to expand the system. More power, less space - the choice is yours and so are the benefits.

FASTER RECHARGE - It not only delivers a mighty punch but also has amazing powers of recovery. Following a discharge, it's important to get your system fully operational as quickly as possible. Recharge time for DataSafe MX batteries has been drastically reduced. This is made possible because of its modified electro-chemistry and exceptionally low internal resistance - and, equally important, it is achieved without reducing the battery's

performance or life. Now you don't have to compromise for the highest level of protection.

LONGER STORAGE - DataSafe's MX batteries have a minimum 12-month shelf-life, which is your guarantee that stock batteries are ready to go into service immediately. No freshening charge - no delays - no add-on costs. The extended shelf-life simplifies stock control and distribution. With monoblocs, individually packaged handling in the warehouse and in transit is also much easier. It's ready for action even after prolonged storage.

LOWER COSTS - Compared with other batteries, DataSafe MX batteries are up to 35% lighter - and less weight can mean lower costs in cabinet design and distribution. Add to this the smaller footprint and increased energy density, the case for the the DataSafe MX battery is even more compelling. The ultimate power storage solution.

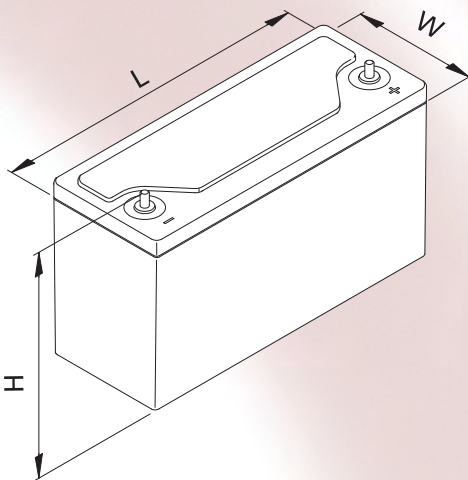
ENVIRONMENTALLY SAFE -

DataSafe MX batteries are designed with the environment very much in mind. It is sealed, safe and with virtually no gas evolution, can operate in any orientation. At the end of its life, the battery can be recycled with well over 90% of the case and components recovered for re-use, protecting power supplies - protecting the environment

DataSafe MX batteries comes with a full 12-months' warranty and are backed by EnerSys® reputation for quality batteries. For reliability, performance and complete peace of mind, no other battery offers so much.

General Specifications

Type	Nominal Voltage (V)	Watts/Cell @ 15 min. rate to 1.67 volts end voltage	Nominal Dimensions								Typical Weight	
			mm	Height inch	mm	Width inch	mm	Length inch	kg	lbs		
12mx150	12	150	152	6.0	97	3.8	250	9.8	9.0	20.0		
12mx200	12	207	204	8.0	97	3.8	250	9.8	12.5	27.5		
12mx270	12	270	255	10.0	121	4.8	220	8.7	18.5	41.0		



Constant Power Discharge (watts per cell) 25°C (77°F)

Cell Type	End Voltage	Standby Time (Minutes)						
		5	10	15	20	30	45	60
12mx150	1.80	278	184	140	114	83.5	60.5	47.7
	1.75	294	191	144	117	85.2	61.4	48.3
	1.70	308	197	148	119	86.7	62.2	48.8
	1.67	316	200	150	120	87.4	62.6	49.1
	1.65	320	202	151	121	87.8	62.9	49.3
	1.63	324	204	152	122	88.2	63.1	49.4
	1.60	329	206	153	122	88.6	63.4	49.6

Cell Type	End Voltage	Standby Time (Minutes)						
		5	10	15	20	30	45	60
12mx200	1.80	420	261	195	157	114	82.5	65.0
	1.75	419	267	200	161	117	84.2	66.2
	1.70	420	272	204	165	120	85.8	67.2
	1.67	421	275	207	167	121	86.6	67.7
	1.65	421	276	208	168	122	87.1	68.1
	1.63	423	278	209	169	122	87.5	68.4
	1.60	425	279	210	170	123	88.1	68.8

Cell Type	End Voltage	Standby Time (Minutes)						
		5	10	15	20	30	45	60
12mx270	1.80	469	322	251	208	156	115	92.0
	1.75	500	336	259	213	159	117	93.3
	1.70	529	348	266	218	162	119	94.5
	1.67	544	355	270	220	163	120	95.2
	1.65	554	359	272	222	164	120	95.6
	1.63	563	362	274	223	165	121	95.9
	1.60	575	367	277	225	166	121	96.3



www.enersys-emea.com

EnerSys
 P.O. Box 14145
 Reading, PA 19612-4145
 USA
 Tel: +1-610-208-1991
 +1-800-538-3627
 Fax: +1-610-372-8613

EnerSys Europe
 Löwenstrasse 32
 8001 Zurich,
 Switzerland

EnerSys Asia
 152 Beach Road
 Gateway East Building
 Level 11
 189721 Singapore
 Tel. +65 6508 1780

Contact:

© 2008 EnerSys. All rights reserved.
 Trademarks and logos are the property of
 EnerSys and its affiliates unless otherwise noted.